

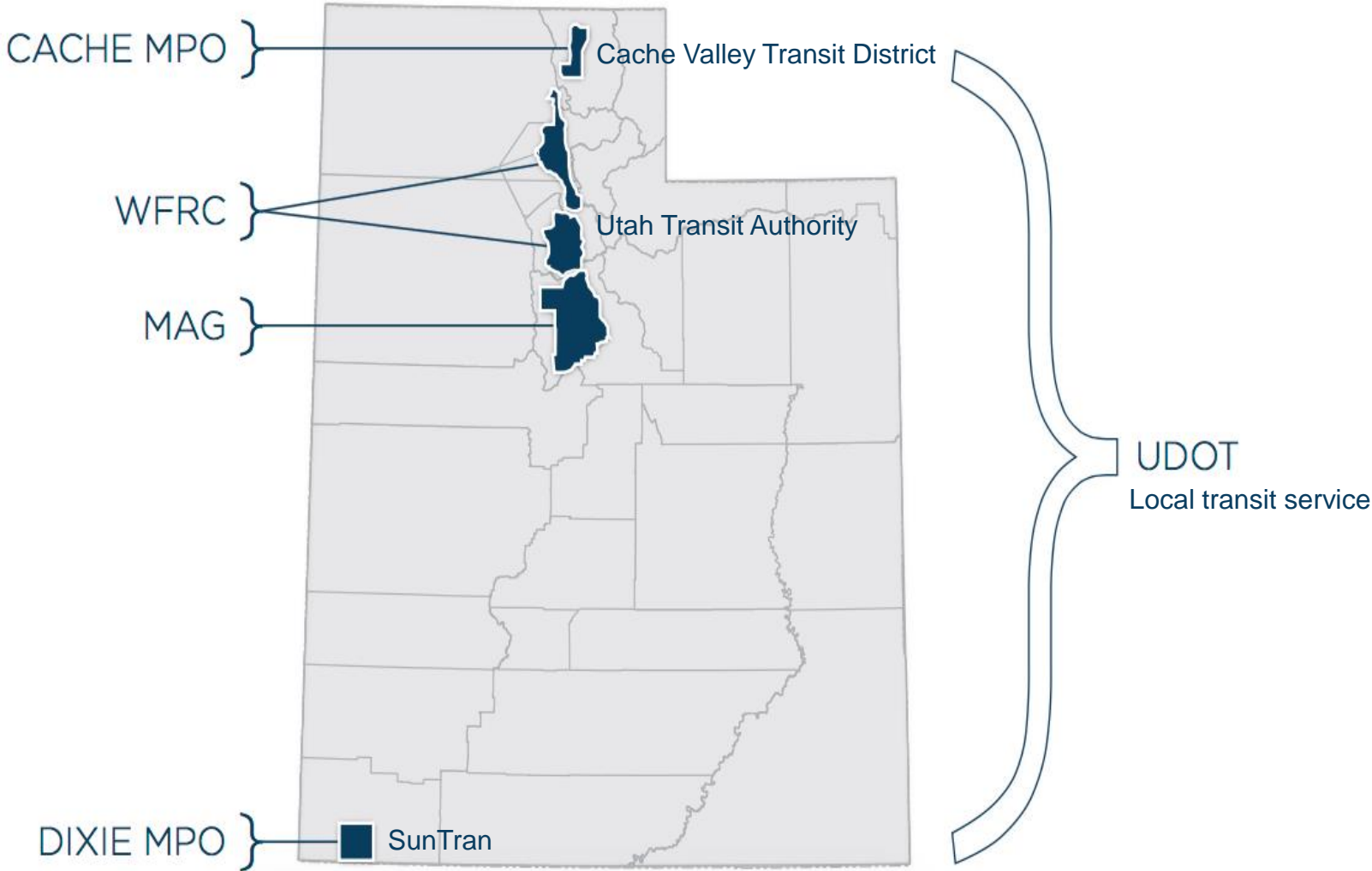


SB34 Data Resources

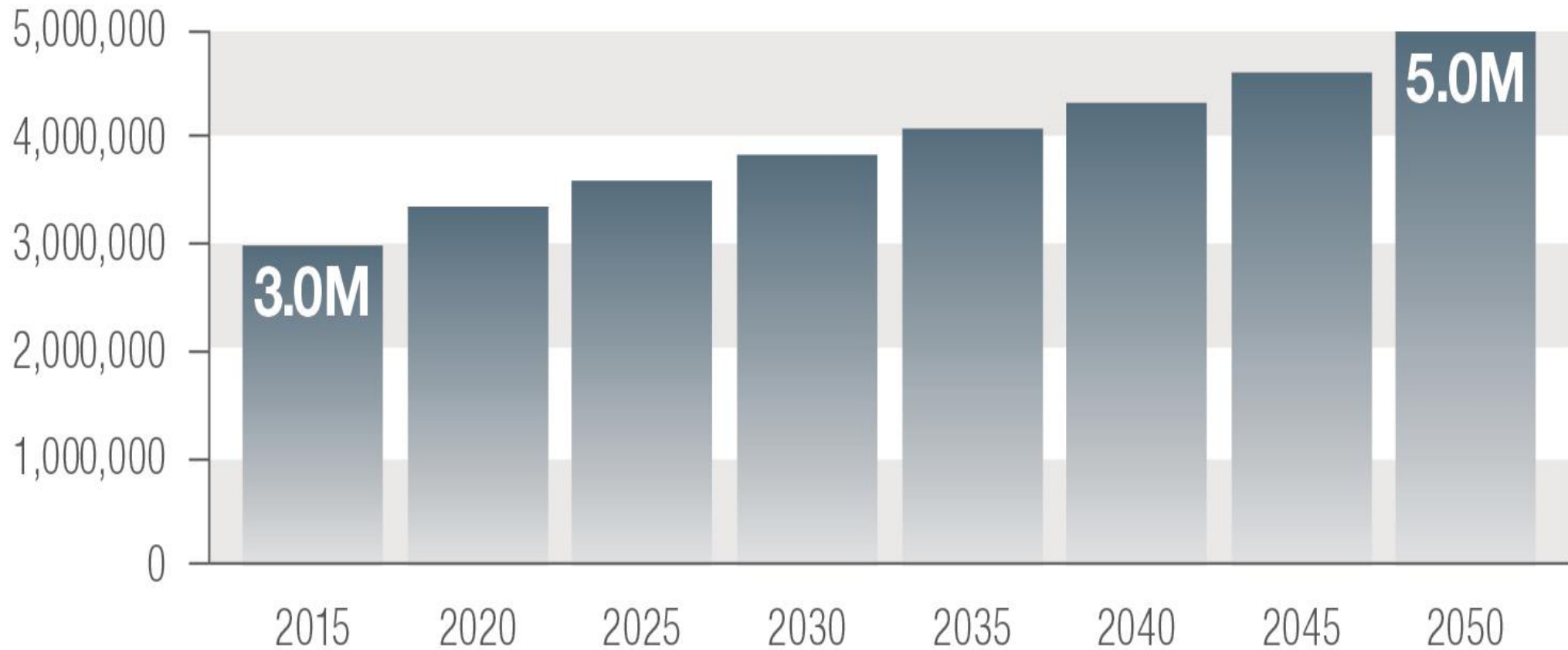
Housing and Transportation in Your General Plan // May 18, 2019



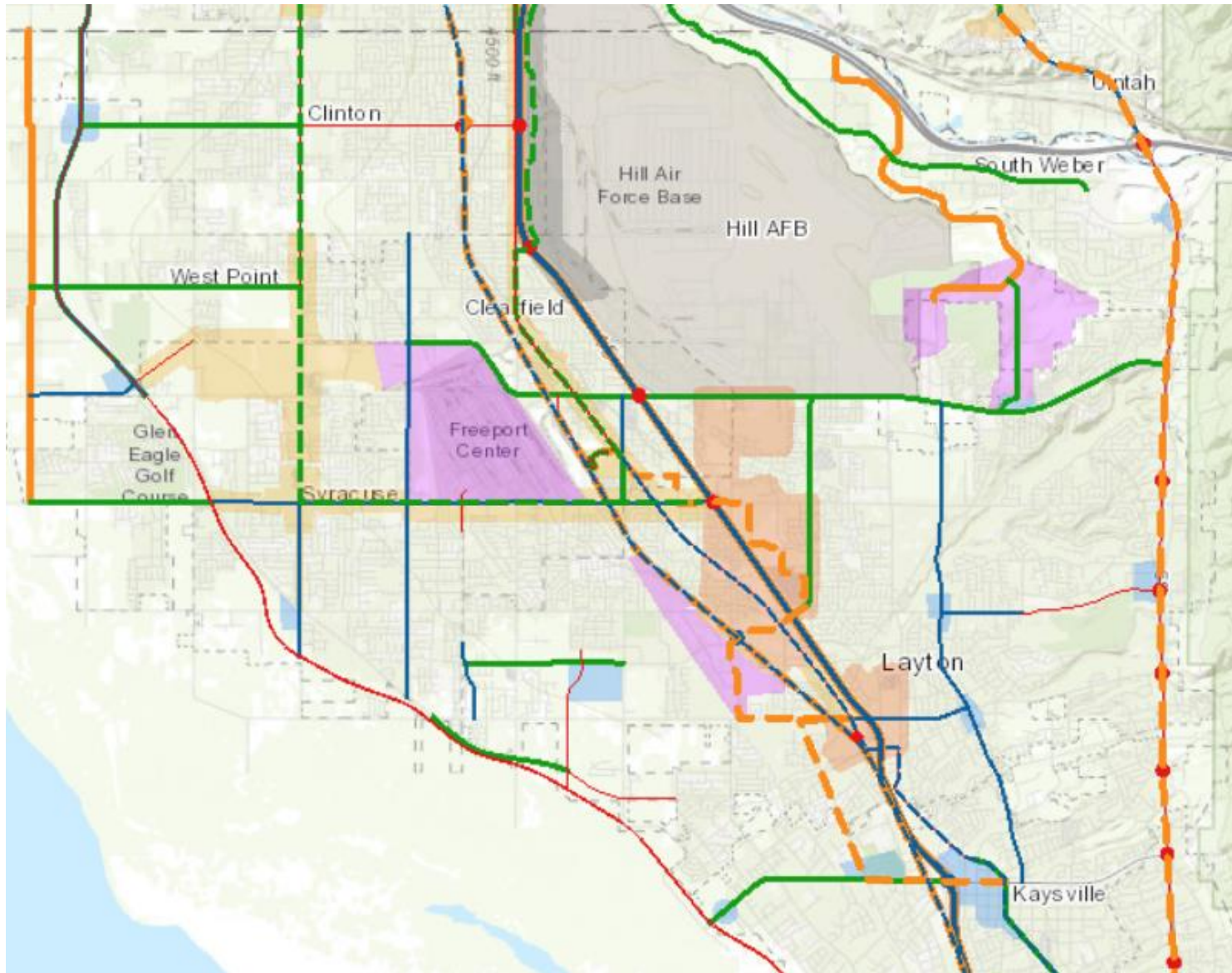
Utah's Transportation Planning Organizations



Utah is growing!

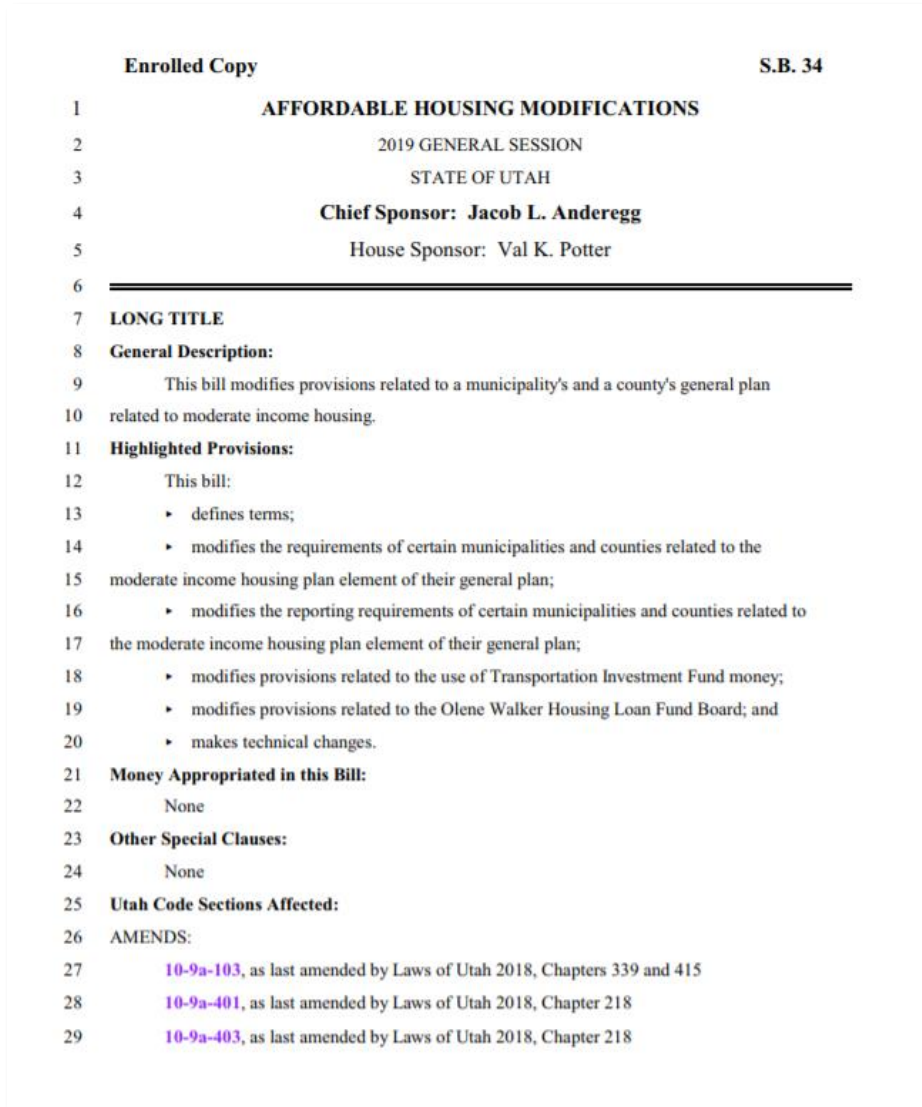


Source: Kem C. Gardner Policy Institute at The University of Utah. <http://gardner.utah.edu/population-projections>.



Regional transportation
and land use planning

SB 34 // Affordable Housing Modifications

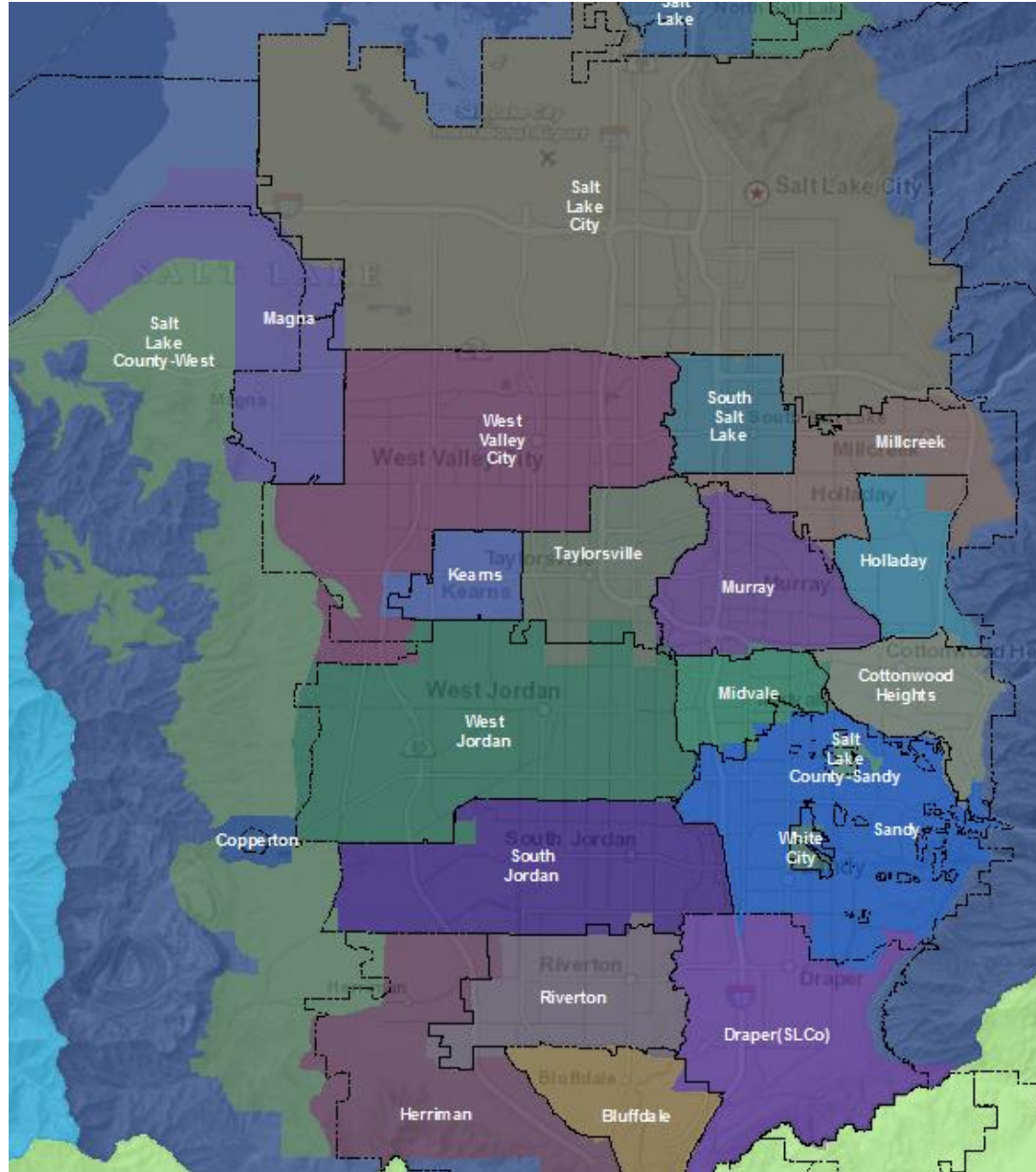


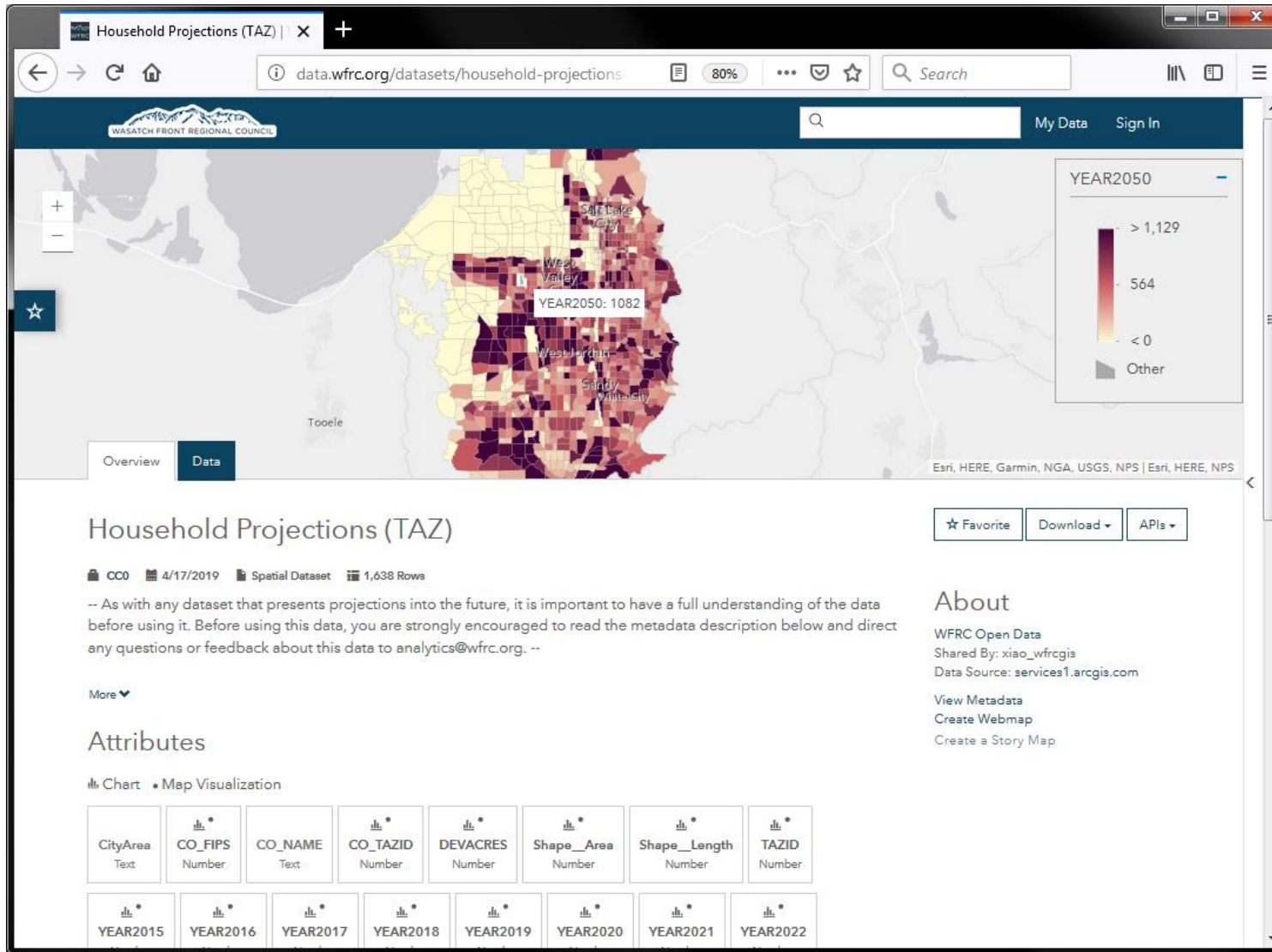
Local governments in their general plans must:

1. Correlate transportation plan with **population and employment projections** and local land use
2. Consider **regional long-range plans** when developing local transportation plan – now including **active transportation**
3. Plan residential and commercial development around **major transit investment corridors** and **stations**

Adopt and report on a moderate income housing plan in order to receive **TIF/TTIF funds**

1 // Population and Employment Projections





Forecasted data:

- » Population
- » Household
- » Employment
 - » Retail jobs
 - » Office jobs
 - » Industrial jobs
 - » Other jobs
- » 2015 - 2050

1 // data.wfrc.org

Household Projections (TAZ) | X

data.wfrc.org/datasets/household-projections

Projections

YEAR2050

> 1,129

564

< 0

Other

Household Projections (TAZ)

CCO 4/17/2019 Spatial Dataset 1,638 Rows

-- As with any dataset that presents projections into the future, it is important to have a full understanding of the data before using it. Before using this data, you are strongly encouraged to read the metadata description below and direct any questions or feedback about this data to analytics@wfrc.org. --

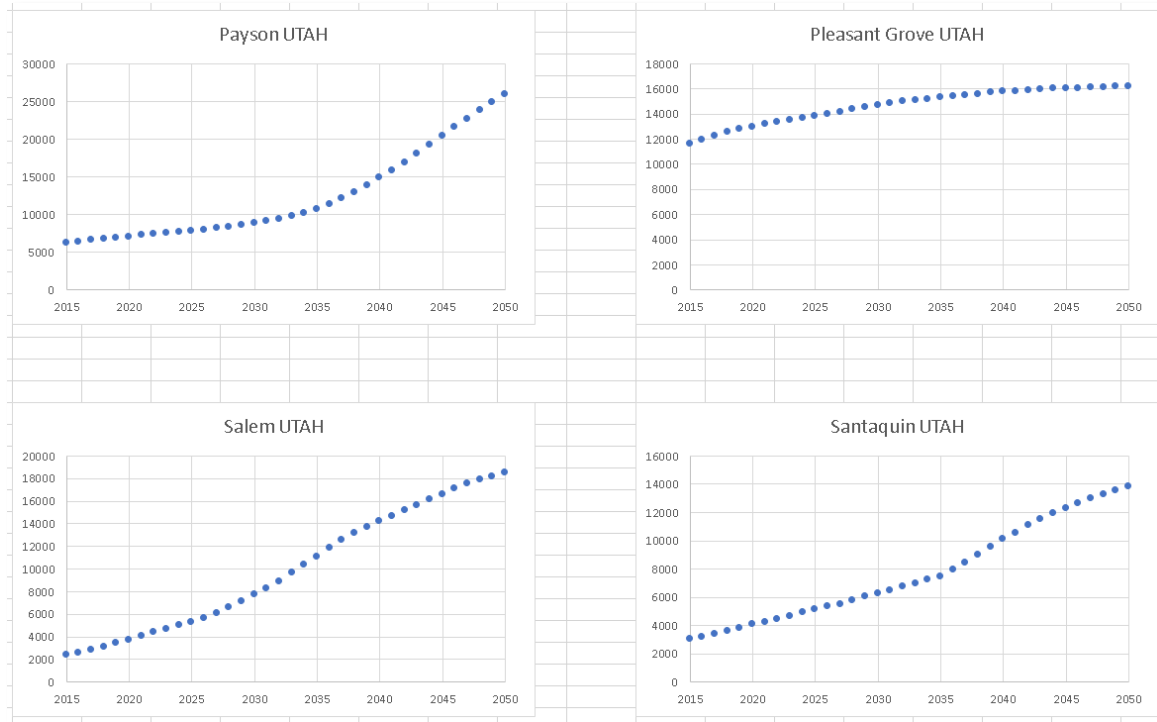
More

Attributes

CityArea Text	CO_FIPS Number	CO_NAME Text	CO_TAZID Number	DEVACRES Number	Shape__Area Number	Shape__Length Number	TAZID Number
YEAR2015	YEAR2016	YEAR2017	YEAR2018	YEAR2019	YEAR2020	YEAR2021	YEAR2022

important
metadata

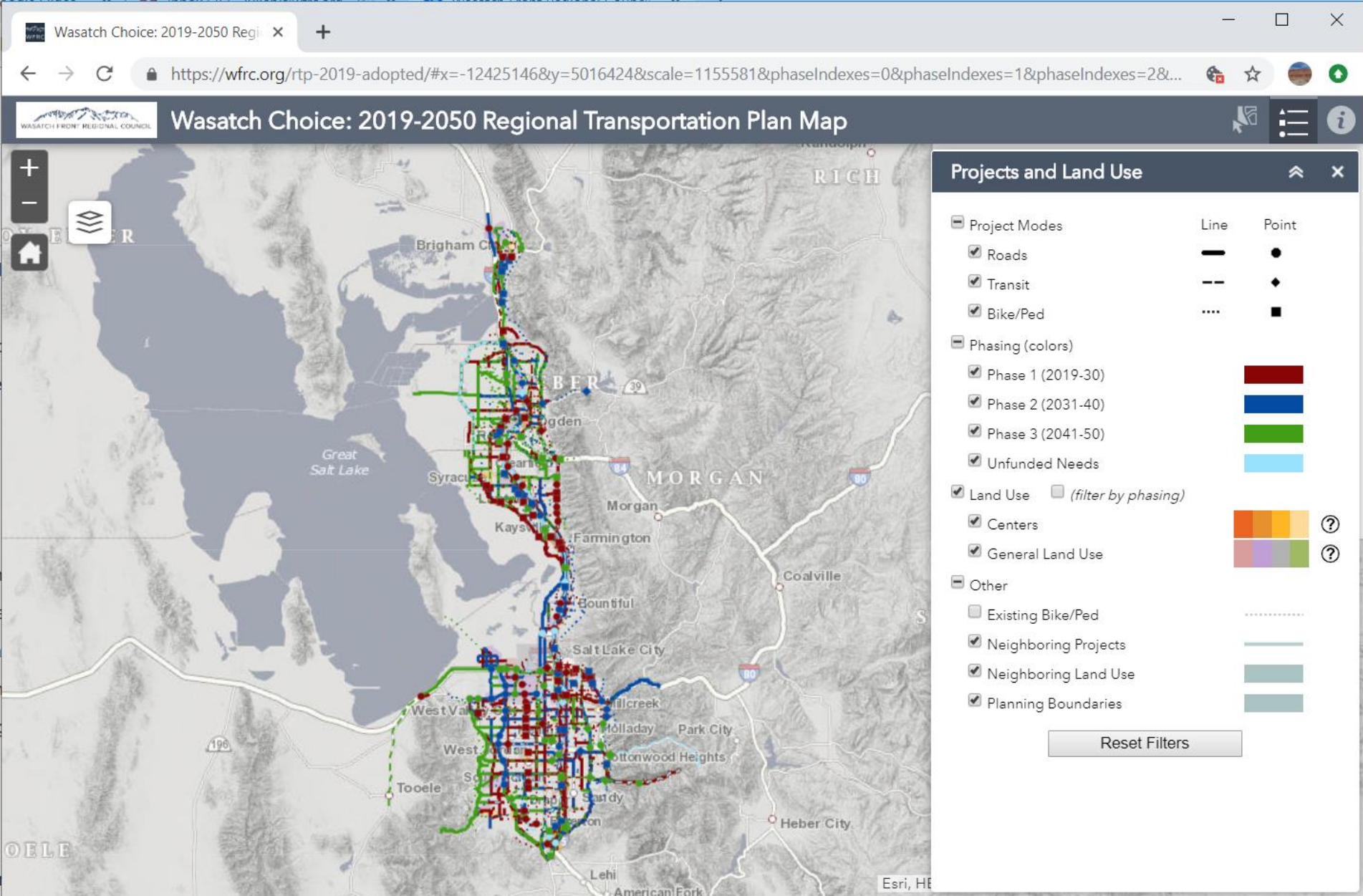
Household Projections



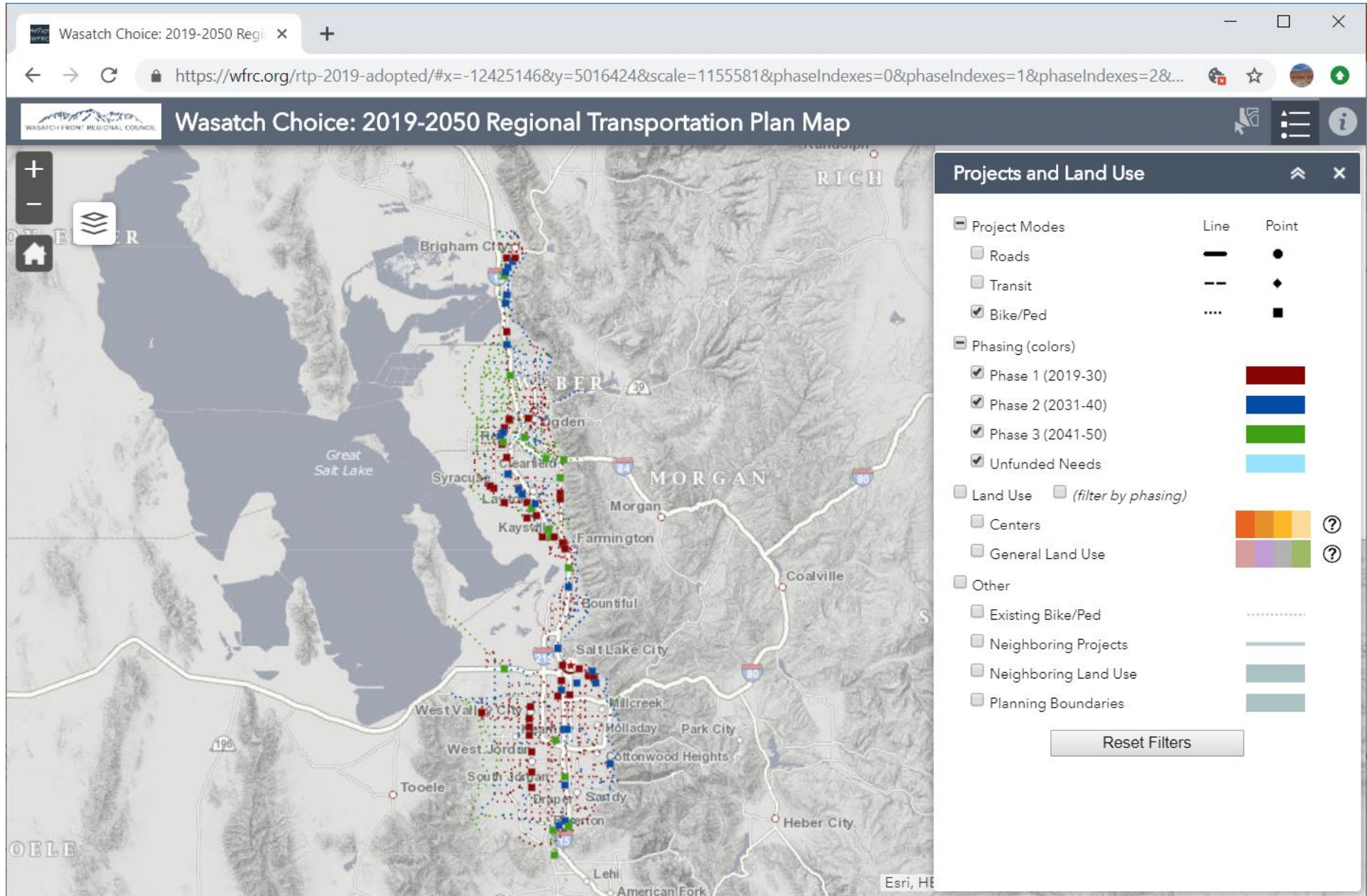
Employment Projections



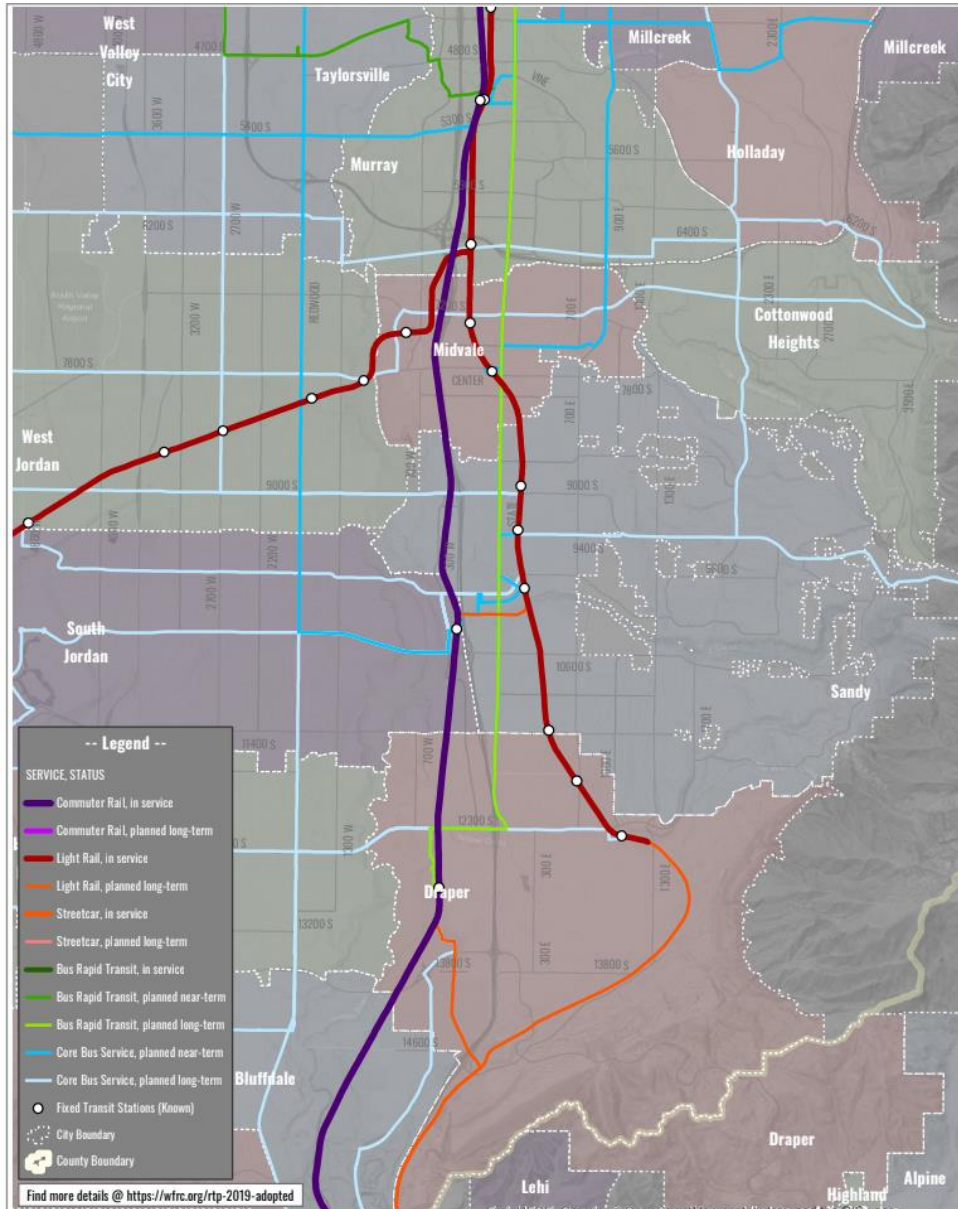
2 // Regional Transportation Plan



2 // Regional Transportation Plan

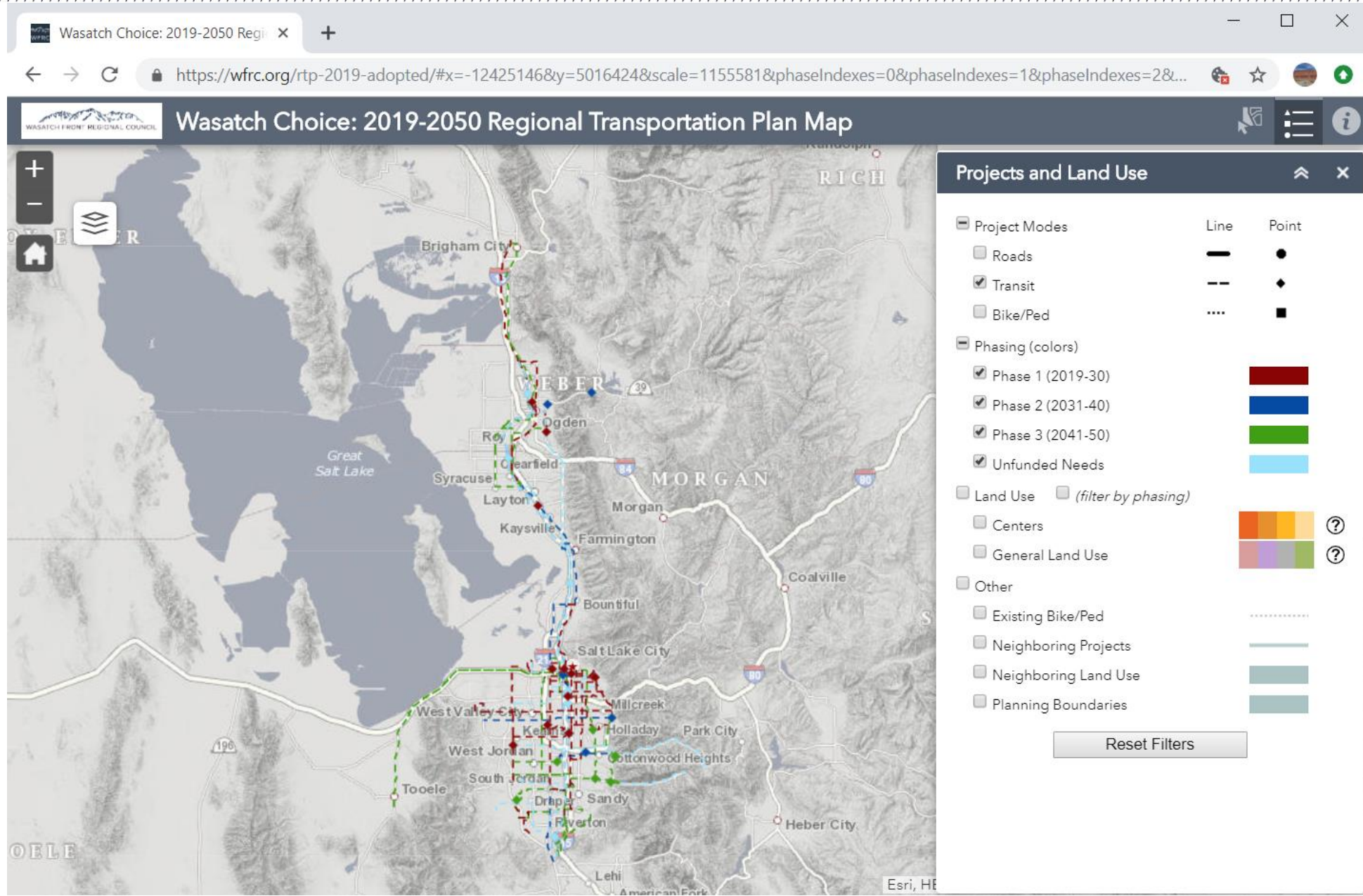


3 // Major Transit Investment Corridors



- » Existing and planned major transit investment **corridors**
- » Known fixed guideway transit **stations**

3 // Major Transit Investment Corridors

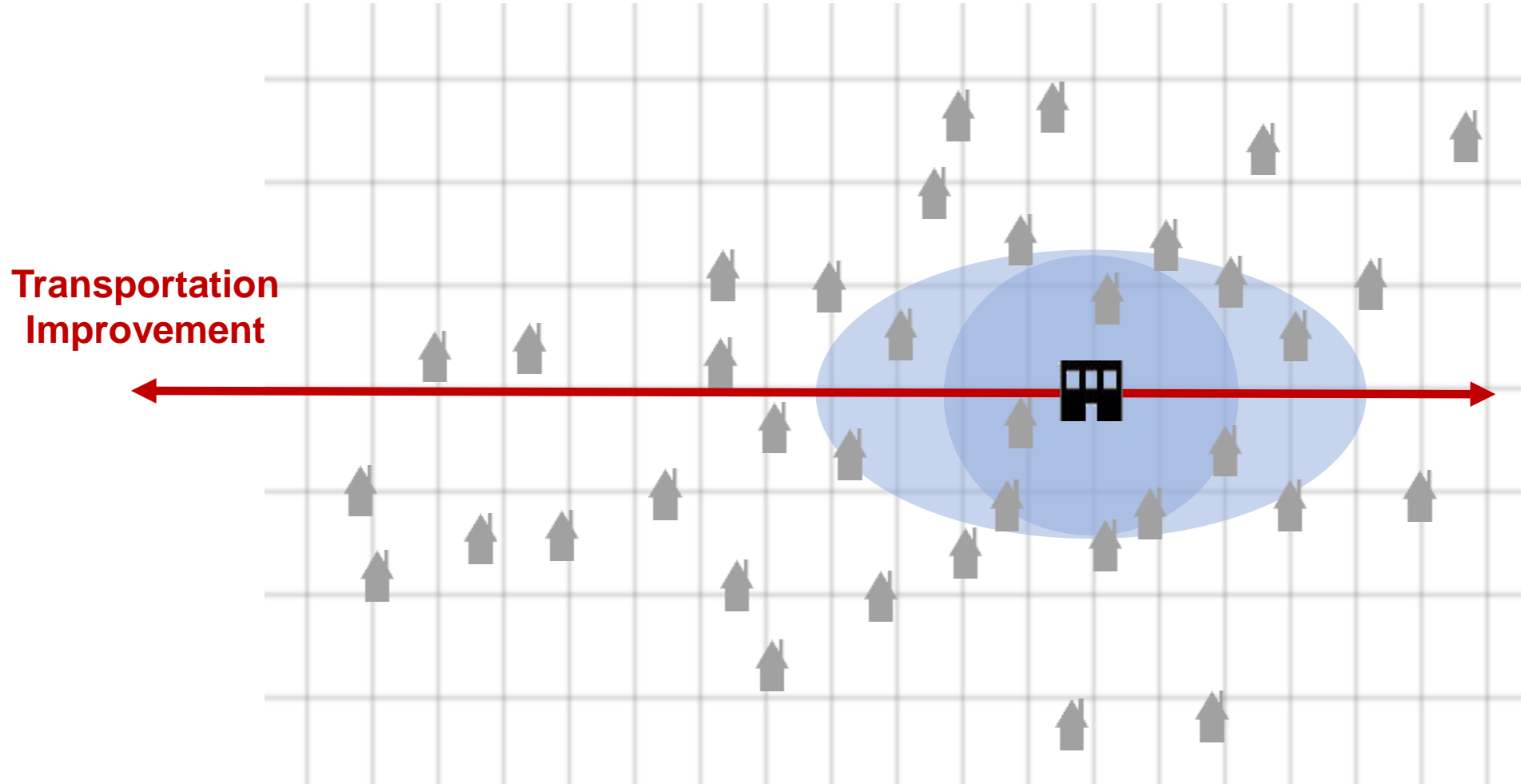


Why // Linking Transportation and Land Use

How are we **improving access** to jobs, education, and destinations?

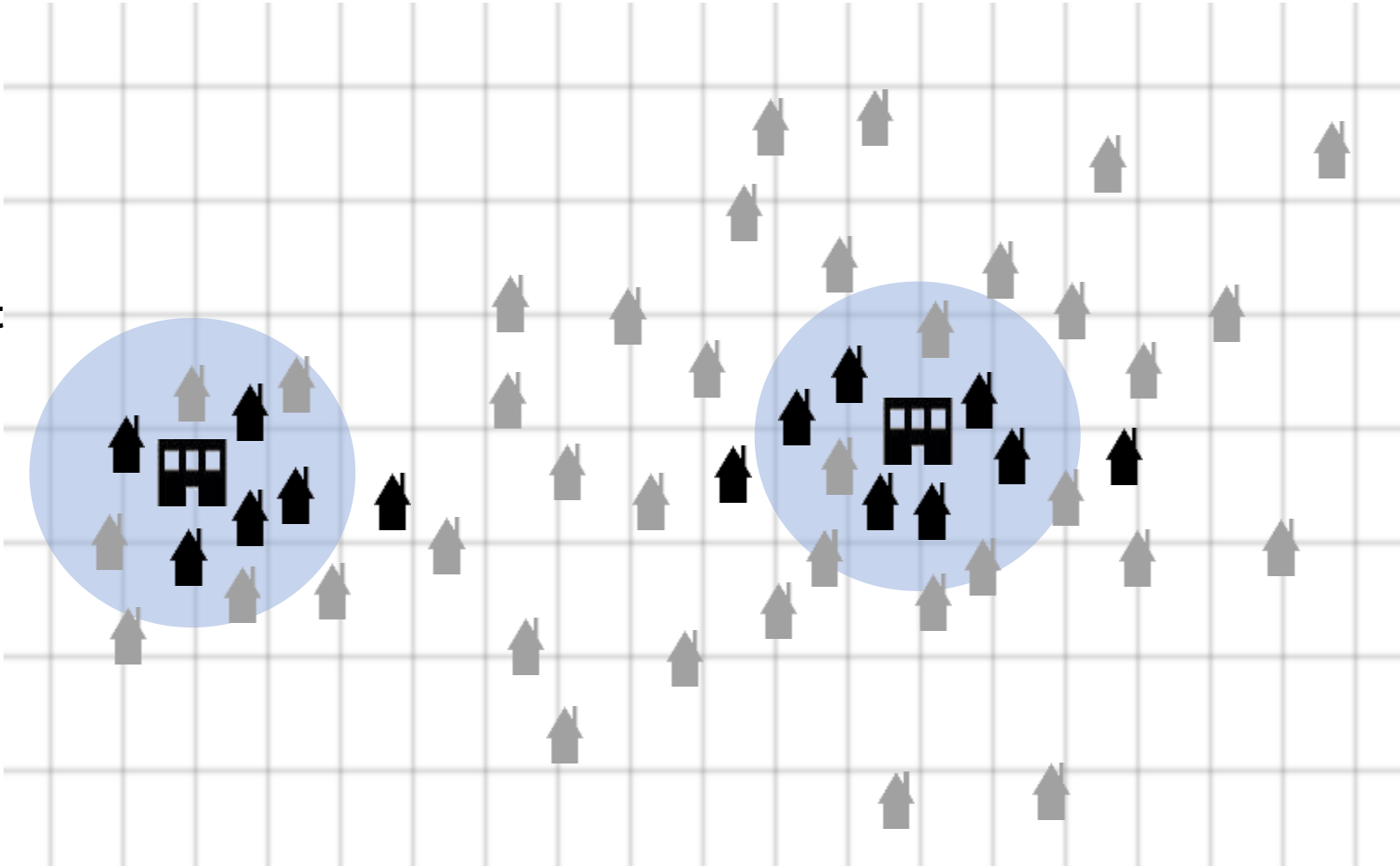


Accessibility // Improved with Better Mobility



Accessibility // Improved with Better Proximity

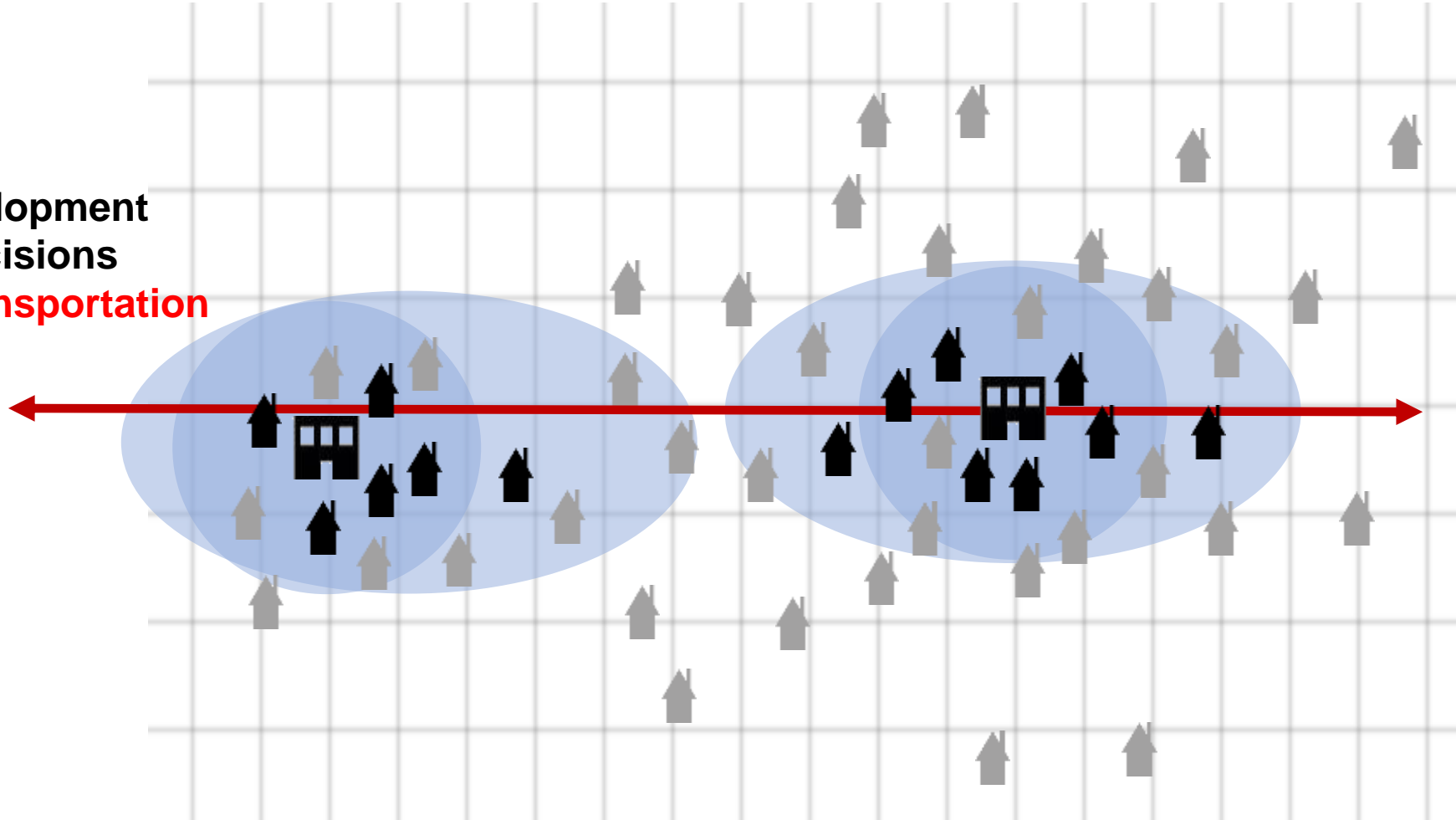
Development
Decisions



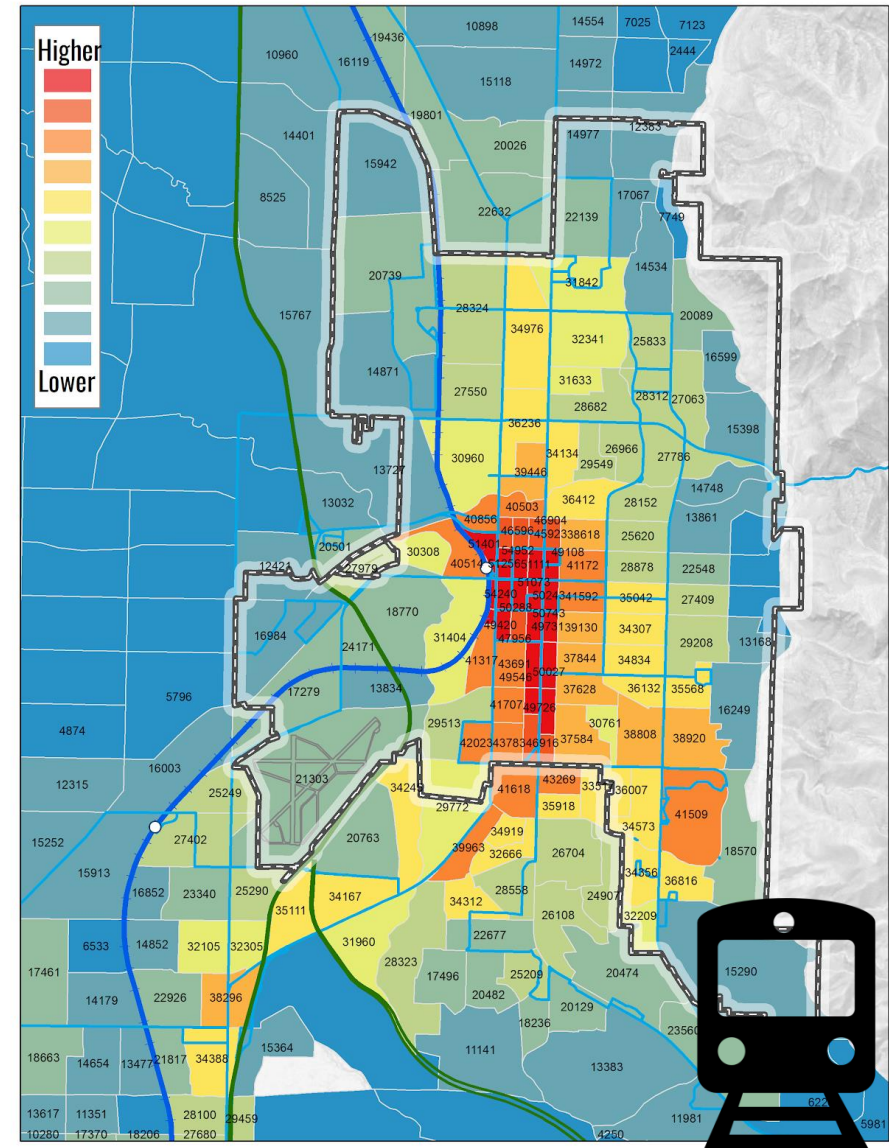
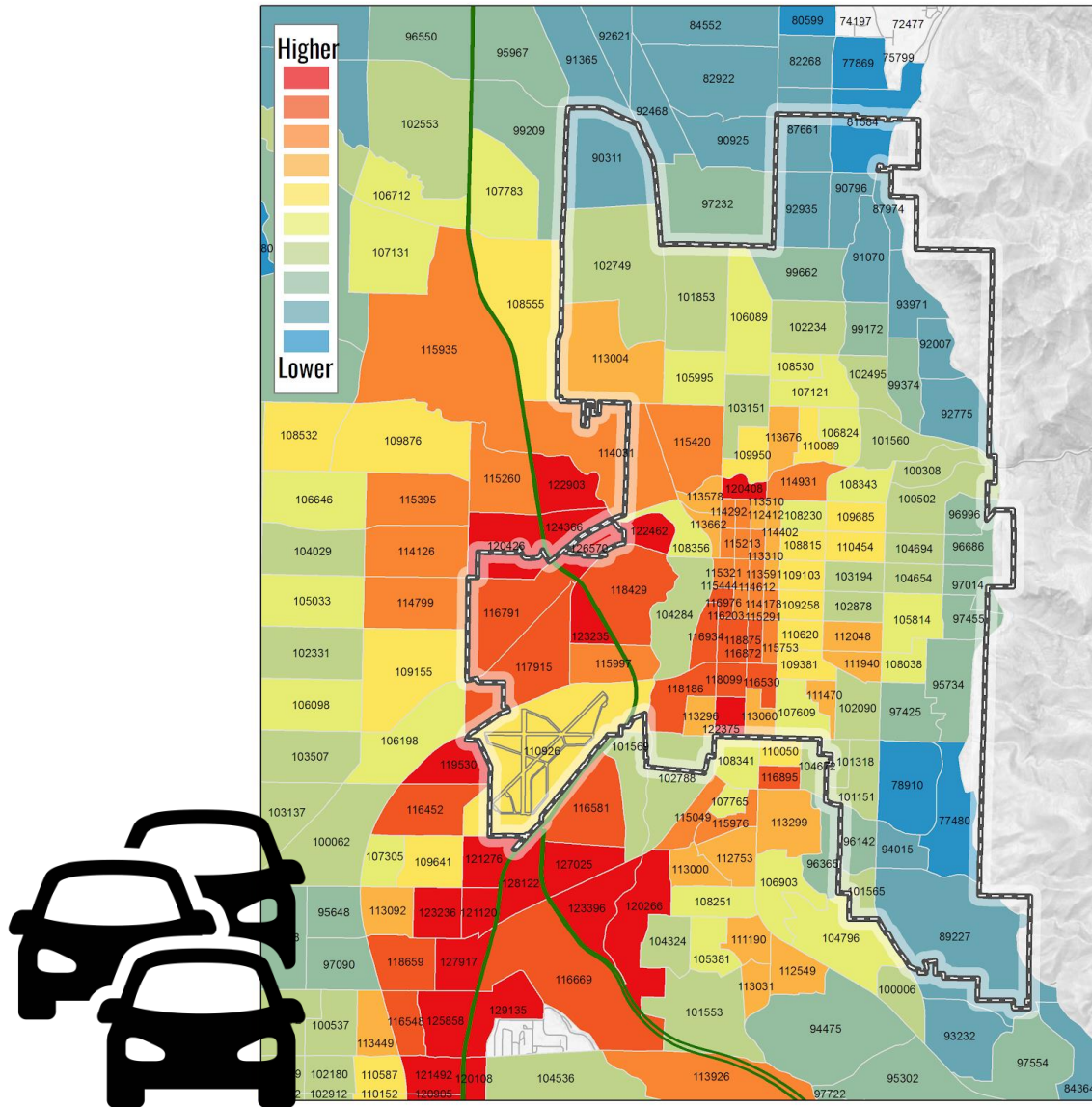
Accessibility // Improved with Better Linkages



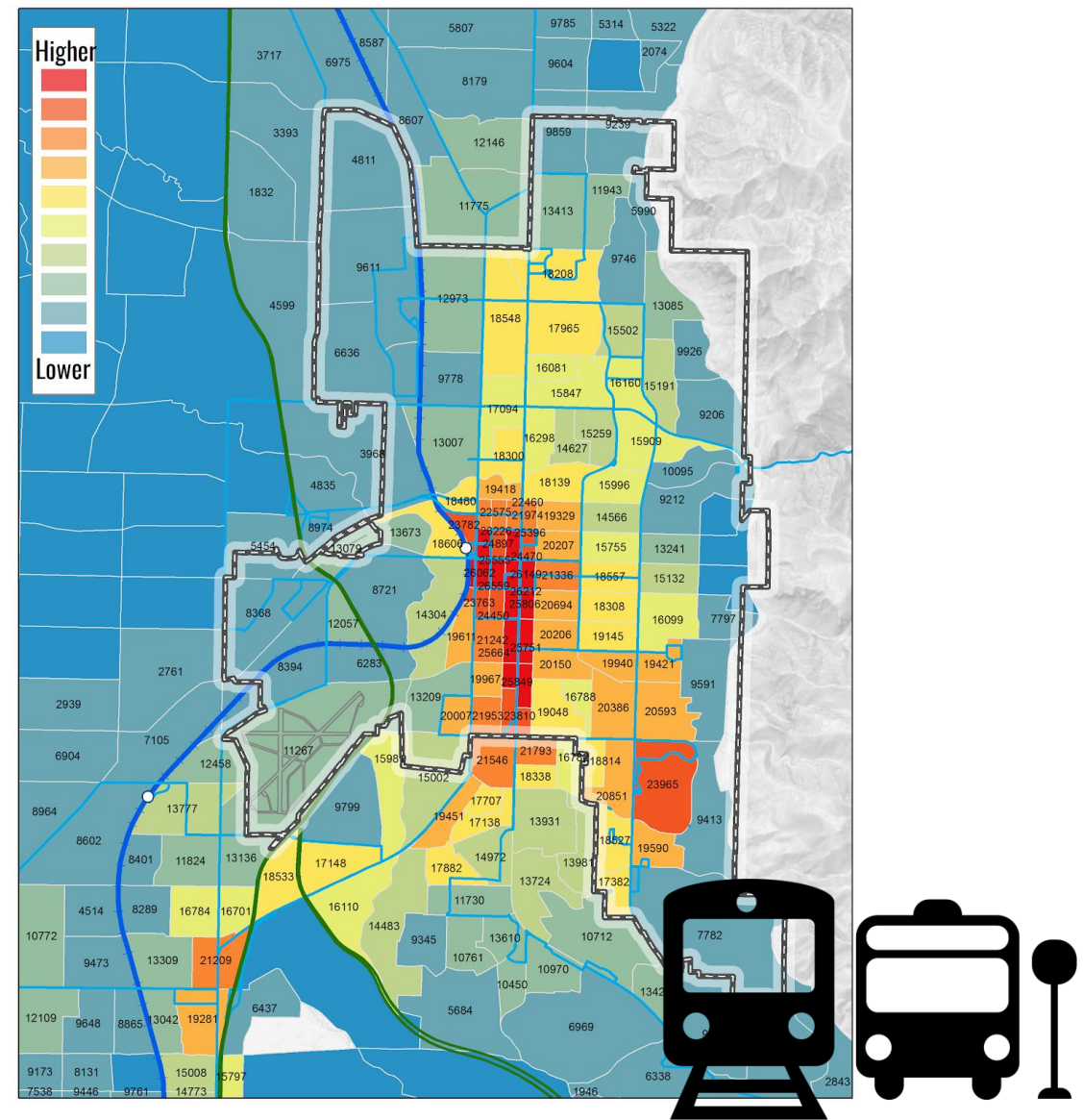
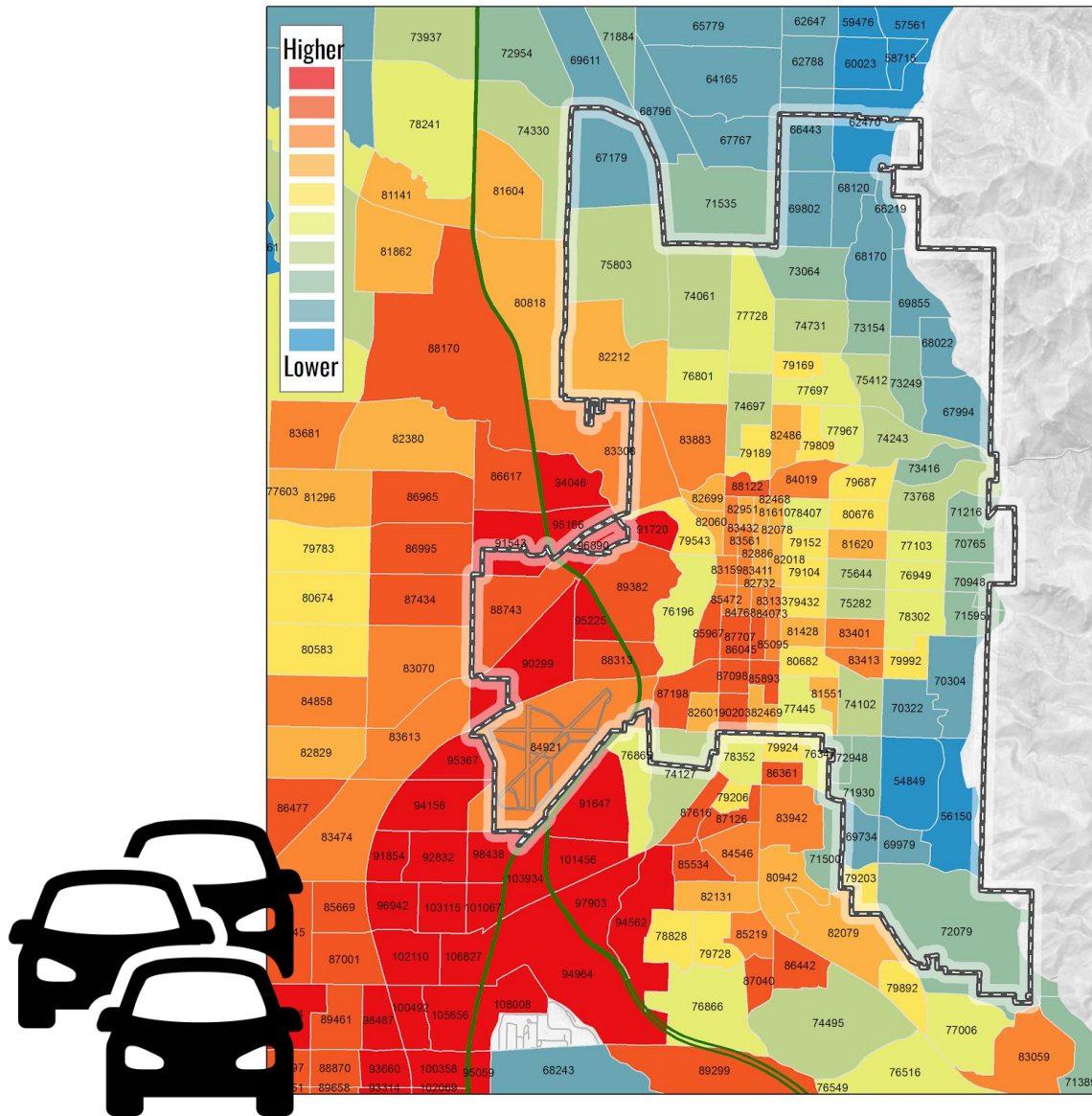
Development
Decisions
with Transportation



Accessibility // Household Access to Jobs

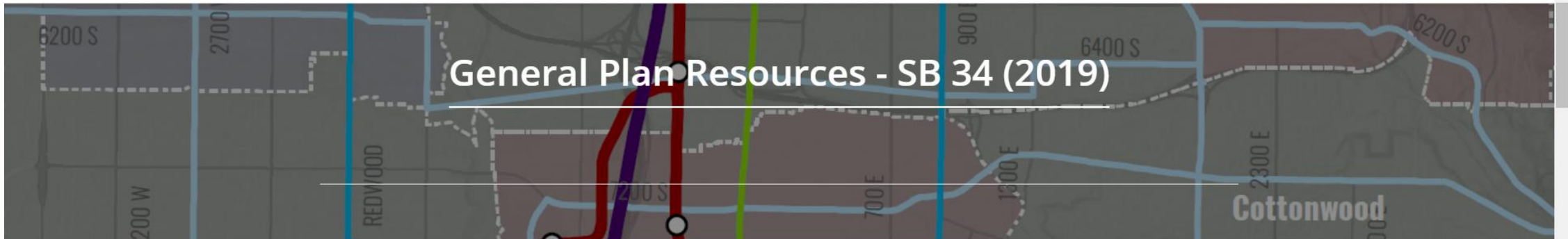


Accessibility // Job Access to Households





>> wfrc.org/maps-data/general-plan-resources



The passage of [Senate Bill 34](#) (SB34, 2019 General Session) into law requires 82 Utah municipalities to ensure that their general plan meets specified requirements by December 1, 2019.

WFRC is working with our Unified Plan partners (UDOT, Mountainland Association of Governments, Cache MPO, and Dixie MPO) to provide city-specific maps and GIS data to support cities as they consider general plan updates related to SB34 requirements.

Here's what's available from this page:

- Small Area Projections: Population, household, and employment (by sector) at the 'City area' and Traffic Analysis Zone (TAZ) levels (annually, through 2050). These are prepared for Utah's regional and statewide travel models, building upon the county-level projections developed by the University of Utah's Gardner Policy Institute.
- Long range transportation plan projects (road, transit, and active transportation modes) including those from the Regional Transportation Plans (RTPs) developed by Utah's four MPOs. The transportation projects are phased in ten year increments and constrained to future revenue projections.
- Major Transit Investment Corridors (existing & planned) and Stations (existing & planned, where the station local has been determined).
- Small Area Household-Job Accessibility (ATO) maps that provide a localized view of how well the transportation system works together with household and employment density. These maps use land use and travel model projected for 2019.

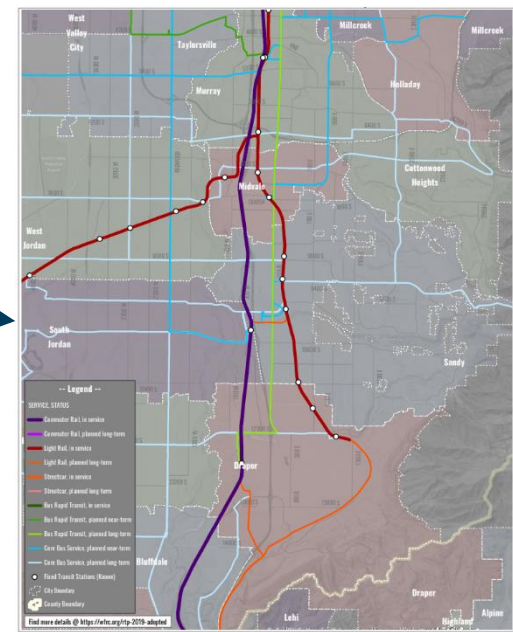
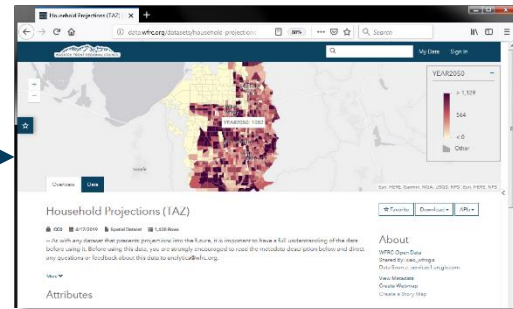
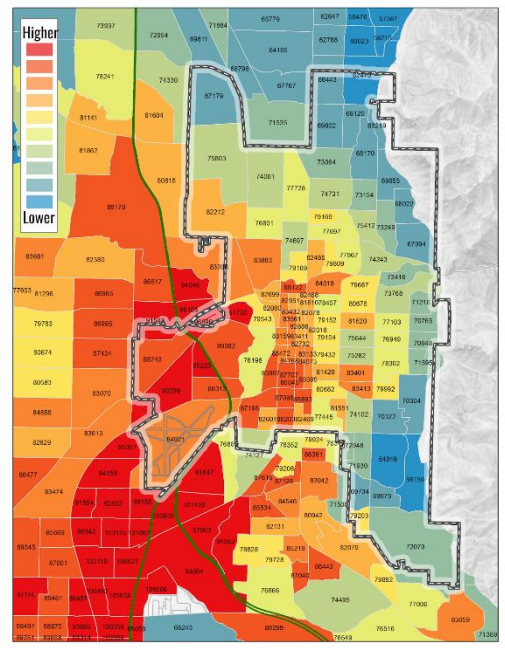
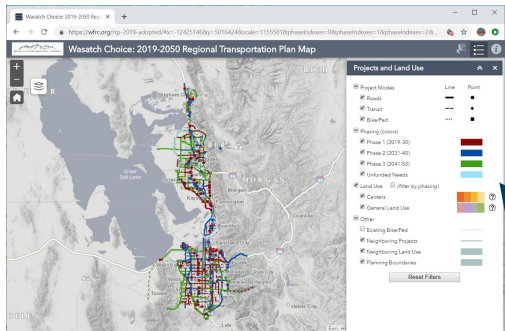
Find your city from the list below and expand to access the maps and data links and note that we will continue to work with our partners to add any missing data.

Please direct any questions regarding the linked maps and data to [WFRC analytics group](#).

- + Alpine
- + American Fork
- + Bluffdale



Kaysville		
County = Davis, Planning Region = WFRC		
Population Estimate: 31,776 (2017, src: Gardiner Policy Institute)		
City Class = 3		
Demographic Projections (2015-2050, src: WFRC)	<ul style="list-style-type: none"> • 'City Area' Population • 'City Area' Households 	<ul style="list-style-type: none"> • TAZ Area Population • TAZ Area Households
Employment Projections (2015-2050, src: WFRC)	<ul style="list-style-type: none"> • 'City Area' Total Jobs • 'City Area' Industrial Jobs • 'City Area' Office Jobs • 'City Area' Retail Jobs • 'City Area' Other Jobs 	<ul style="list-style-type: none"> • TAZ Area Total Jobs • TAZ Area Industrial Jobs • TAZ Area Office Jobs • TAZ Area Retail Jobs • TAZ Area Other Jobs
Long Range Transportation Plan (RTP, etc.), src: WFRC	<ul style="list-style-type: none"> • RTP Projects Web Map coming soon • Long Range Plan Projects GIS Data • RTP Centers GIS Data 	
Major Transit Investment Corridors	<ul style="list-style-type: none"> • Davis County North (pdf) • Major Transit Investment GIS Data 	
Workplace Accessibility (ATO), by TAZ src: WFRC/MAG	<p>Small Region PDF Maps:</p> <ul style="list-style-type: none"> • Household Access to Jobs, Mode = Auto • Household Access to Jobs, Mode = Transit • Employer/Business Access to Households, Mode = Auto • Employer/Business Access to Households, Mode = Transit • Composite Household-Job Accessibility, Mode = Auto • Composite Household-Job Accessibility, Mode = Transit <p>GIS data:</p> <ul style="list-style-type: none"> • Workplace Accessibility GIS Data (all 6 indicators) 	



Resources // Planning Technical Assistance



Resources // Street Connectivity Guide

UTAH
STREET
CONNECTIVITY
GUIDE



<http://wfrc.org/Studies/UtahStreetConnectivityGuide-FINALAndAppendix.pdf>

A RESOURCE FOR WHAT STREET CONNECTIVITY IS, WHY IT IS IMPORTANT - AND HOW TO INCREASE IT IN OUR COMMUNITIES



SB34 Data Resources

Housing and Transportation in Your General Plan // May 18, 2019

