

April 24, 2024

## Government In the Basin (GIB) Training Seminar

---

# Integrating Water & Land Use Planning



Rick Webster | Project Specialist  
Division of Water Resources



PLAN | CONSERVE | DEVELOP | PROTECT  
Utah's Water Resources

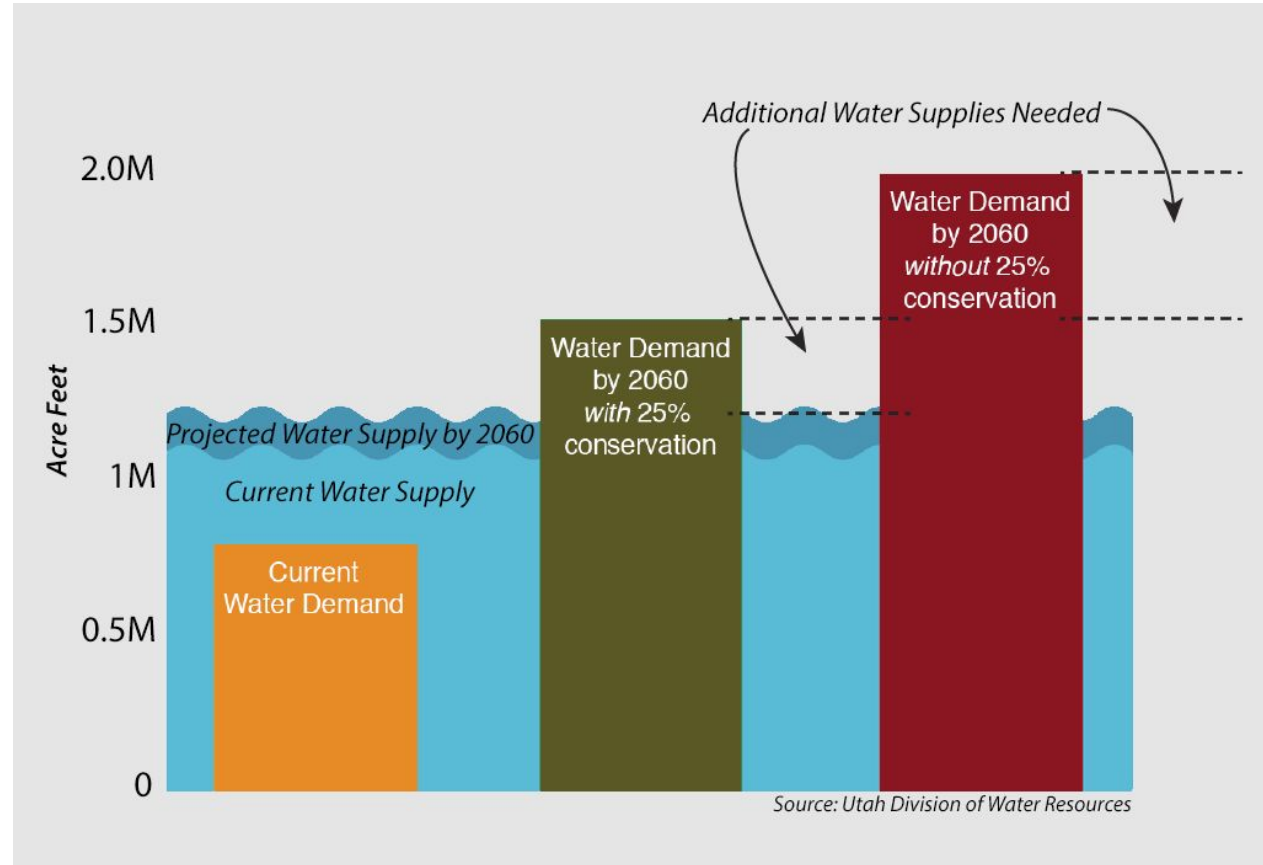
---

## Why integrate water and land use planning?

- Historically siloed, leading to inefficiencies throughout the development process
- Empowers communities to improve water efficiency within their own context, including aesthetics, culture, and values (i.e., every community is different)
- Increases resiliency to ongoing and future droughts
- More and more resources, support, technical expertise, and assistance are being made available to support interested communities

# Growth

- Population will double
- Water supply is finite





# Legislative Action

## 2022-2023 legislative session requirements

SB 110 (2022)

SB 76 (2023)

General Plan: Water Use and Preservation Element

Utah Code § 10-9a-403 Municipal

Utah Code § 17-27a-403 County

## Who and When?

- **all** counties
- municipalities **except** those of the 5th class or towns
- Adopted into the general plan by **December 31, 2025**



# 10-9a-403. General plan preparation.



- At a minimum, the proposed general plan shall be accompanied by
  - maps
  - Charts
  - **descriptive and explanatory matter**
- shall include the planning commission's recommendations

# Drafting the Element

The Planning Commission shall.....

## Address

The effect of development on water demand

Reducing water demand for future development

Reducing water demand for existing development

Eliminate entity's water waste

## Consult

Drinking water system

DWRe

Dept Ag & Food

Div. of Drink Water

Canal and/or irrigation companies

## Consider

Regional Water Conservation goals

Municipality WCP

Principles of sustainable landscaping

Agricultural Protection areas within the municipality

## Review

Municipality's land use ordinances

## Recommend

Water conservation policies to be determined by the municipality

Street landscaping options

Additional water demand reduction strategies

Low water use landscaping standards

Changes to an ordinance that promotes the inefficient use of water

# The Big Four

- The effect of permitted development or patterns of development on water demand and water infrastructure;
- Methods of reducing water demand and per capita consumption for future development;
- Methods of reducing water demand and per capita consumption for existing development; and
- Opportunities to modify the entity's operations to eliminate practices or conditions that waste water.





# Consult

Planning commission shall consult with:

Public water system serving the entity with drinking water about;

- Water supply planning
- Water distribution planning
- Water Budget for development

Division of Water Resources regarding:

- Regional water conservation goals
- Effect of land use on the Great Salt Lake.





# Consult

## Division of Drinking Water about:

- Water supply planning, including drinking water source and storage capacity consistent with Section [19-4-114](#);
- Water distribution planning, including infrastructure and impact fee facilities plan.
- Consider including wholesale supplier in conversation.

## Division of Drinking Water:

- May establish source and storage minimum sizing requirements
- May adjust system-specific sizing standards for a public water system
- May establish regional source and storage minimum sizing standards for community water systems



Michael Grange  
[mgrange@utah.gov](mailto:mgrange@utah.gov)  
801 536-0069

Dixon Ekins  
[dcekins@utah.gov](mailto:dcekins@utah.gov)  
(435) 291-0122

# Consult

City Recommended, County Mandatory

## Dept of Food and Agriculture.

Jay Olsen

[jayolsen@utah.gov](mailto:jayolsen@utah.gov)

801 718-0517

- potential benefits of agriculture conservation easements
- potential implementation of agriculture water optimization projects that would support regional water conservation goals.
- Identify and consider agricultural protection areas

### Irrigation or canal company

Must notify so that the irrigation or canal company can be involved in the protection and integrity of the irrigation or canal company's delivery systems.

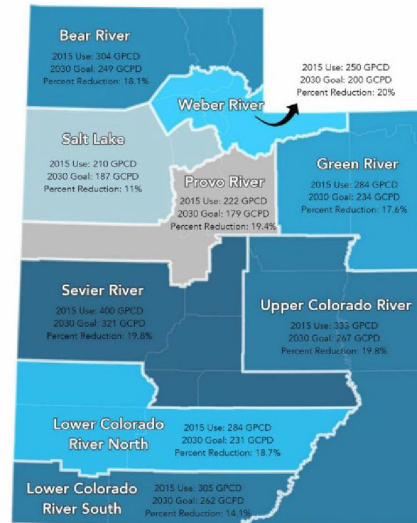


# Planning commission shall consider:

- Regional water conservation goals
- Municipality's water conservation plan (if applicable)
- Principles of sustainable landscaping



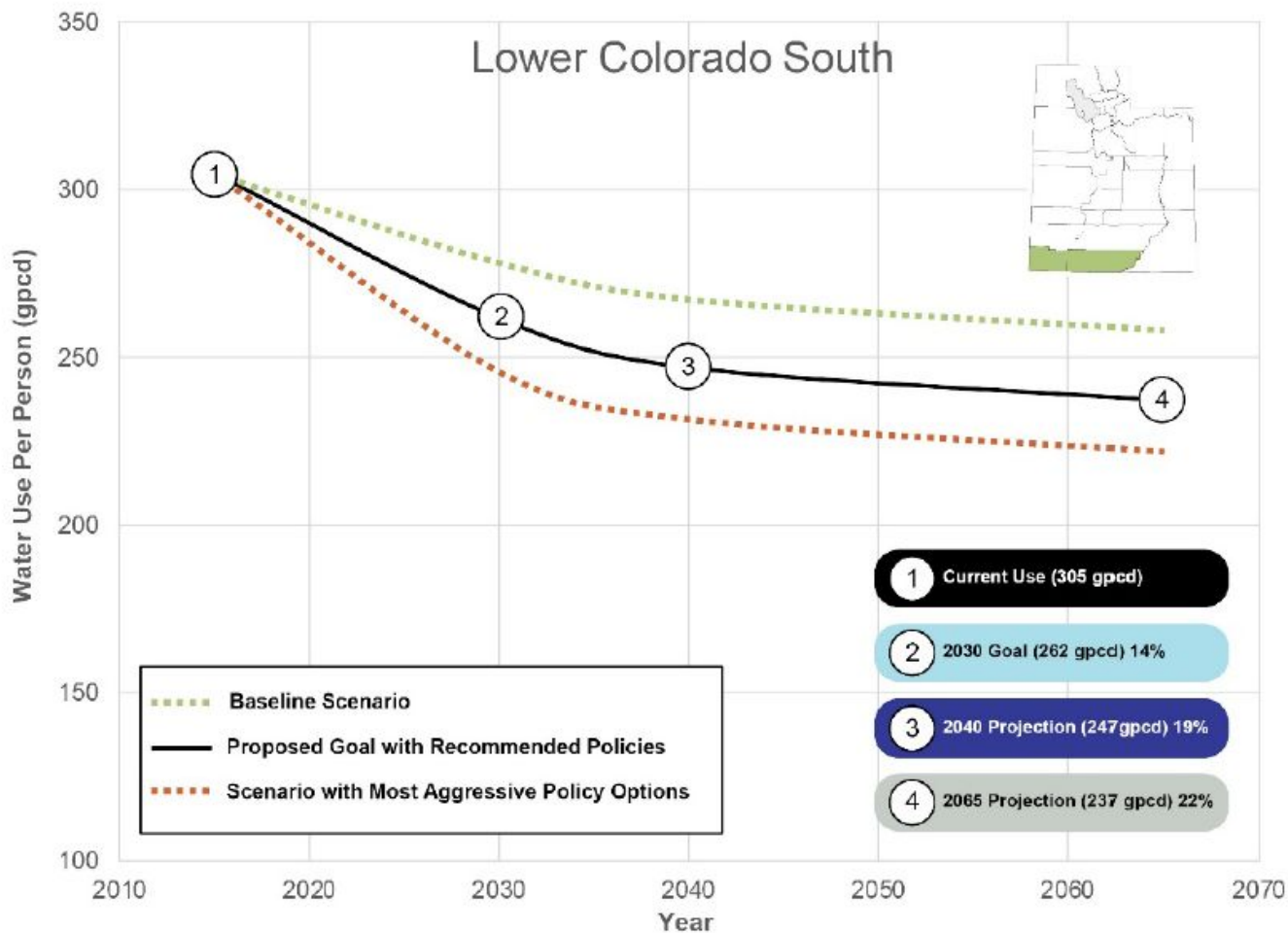
M&I Water Conservation Regions  
2030 Goals and 2015 Use Averages



2030 Statewide Water Conservation Goal  
**202 GPCD**  
Gallons per Capita per Day

16% Reduction from  
240 GPCD State Average Use





Note: The baseline and aggressive policy scenarios do not consider the cost or feasibility of achieving the assumed use patterns. They have been included solely to provide perspective relative to past and current water use and to help each region understand what must occur to achieve the final goals.

## Planning Commission to Review



The municipality's land use ordinances and include a recommendation for changes to an ordinance that promotes the inefficient use of water;



# Planning Commission to Recommend **(Mandatory)**



Water conservation policies to be determined by the municipality or county;



Landscaping options within a public street for current and future development that do not require the use of lawn or turf in a parkstrip;



Changes to an ordinance that promotes the inefficient use of water;



Low water use landscaping standards for a new:

- commercial, industrial, or institutional development;
- common interest community, as defined in Section 57-25-102;
- multifamily housing project

The effect of permitted development or patterns of development on water demand and water infrastructure,



4 – .25 Acre Lots



18 – Townhomes in an Acre



60 – Apartments in an Acre

Scenario	Annual Outdoor (Gal)	Annual Indoor (Gal)	Annual Gallons / Acre	GPCD
Homes	779,996	256,668	1,036,664	236.68
Townhomes	387,257	962,505	1,349,762	82.18
Apartments	124,600	2,245,845	2,370,445	61.85

# Technical Assistance

- Available to:
  - Answer Questions
  - Provide examples
  - Point Direction for more Resources
  - Offer guidance on Regional Water Conservation Goals
- Reviewing General Plans
- **Financial support for assistance with coordinated planning is currently in the rule-making process**





# Programs & Incentives



WESTERN  
RESOURCE  
INSTITUTE



BABBITT CENTER  
FOR LAND AND WATER POLICY



CWEL  
Center for Water-Efficient Landscaping

## Growing Water Smart in Utah

- Winter 2022-Summer 2024
- Primary Responsibilities:
  - Develop Utah Growing Water Smart Curriculum
  - Conduct *at least* 2 stakeholders workshops
    - 5-7 community teams per workshop
  - Provide follow-up technical assistance to implement community Action Plans
- The Division has received funding to hold 6-7 more GWS trainings



# Utah Growing Water Smart Project Team



**Center for Water-Efficient Landscaping**  
**UtahStateUniversity.**



**BABBITT CENTER**  
FOR LAND AND WATER POLICY

*A Center of the Lincoln Institute of Land Policy*



# Growing Water Smart

Brings key community staff and decision-makers on water and land use planning together to collaborate in building a more resilient and sustainable water future



Photo by Aaron Fortin, USU



Photo by Aaron Fortin, USU



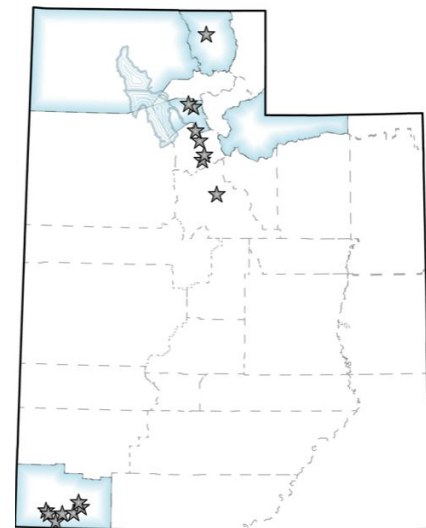
Photo by Michael Sanchez, DWRe

## Three Successful Utah workshops

51 communities and 225 people participated in these workshops

Each team created an action plan along with an implementation timeline

A fourth workshop for northern Utah in will be held in May



GWS Participant Map

# Utah Growing Water Smart Workshops

Presentations, structured team work sessions, and peer-to-peer exchanges.



Facilitation team supports communities in developing their action plans and steps toward creating water-smart communities.





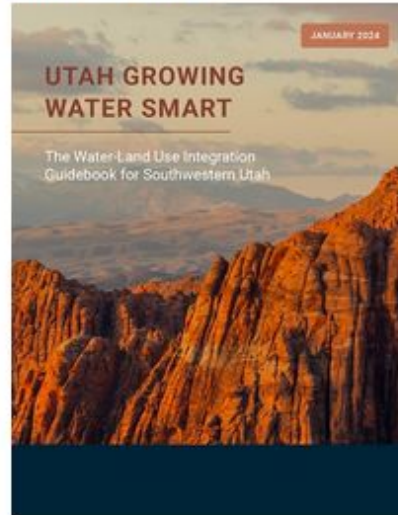
# Utah Growing Water Smart Resources

## Community Self-Assessment

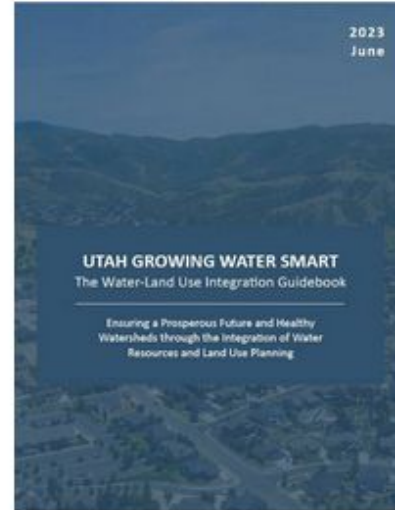


Photo by Aaron Fortin, USU

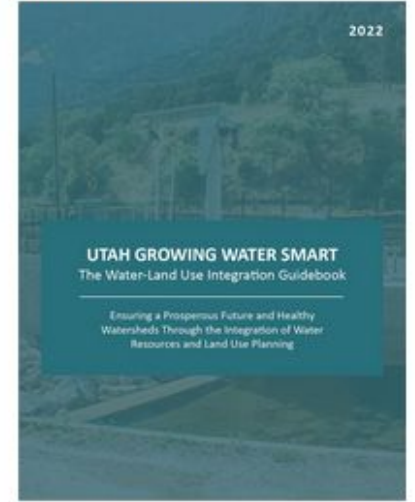
## Utah Growing Water Smart Guidebook Southwestern Utah



## Utah Growing Water Smart Guidebook Northern Utah



## Utah Growing Water Smart Guidebook North Central Utah

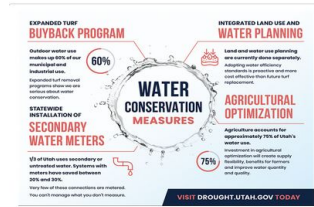
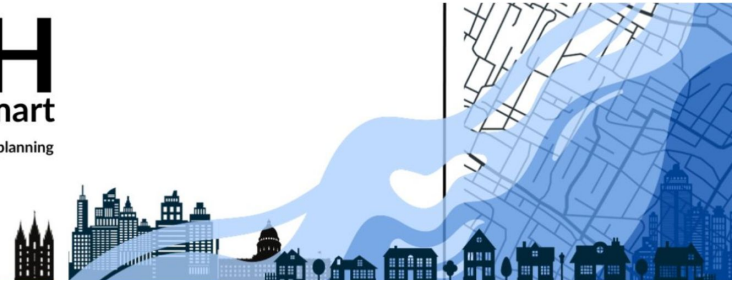


Available at: <https://extension.usu.edu/cwel/utah-growing-water-smart/resources>

# Utah Growing Water Smart Resources



**UTAH**  
Growing Water Smart  
integrating water and land use planning



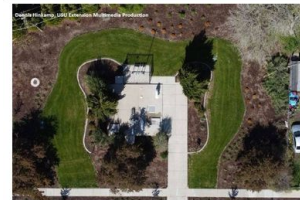
About Utah Growing Water Smart



Workshops



Resources



Case Studies



Collaborators



Contact Us



# UT Growing Water Smart Workshop

## What is the format?



**Day 1: Setting a Workshop Intention and Rapport Building**



**Day 2: Peer to Peer Roundtables & Team Breakouts**



**Day 3: Finalizing the Action Planning & Messaging**

# More resources from regional partners



WESTERN  
RESOURCE  
ADVOCATES

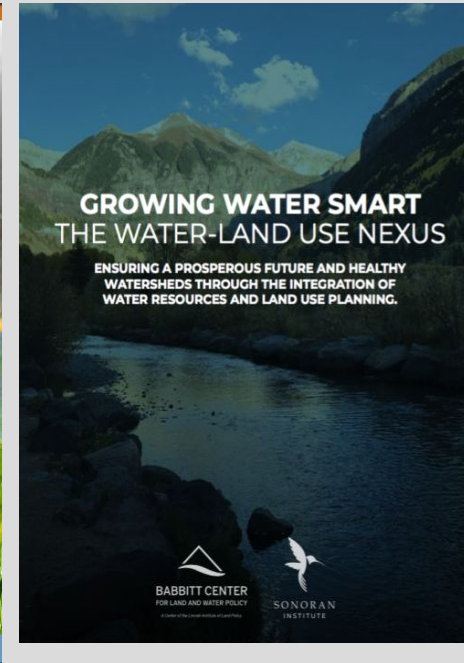
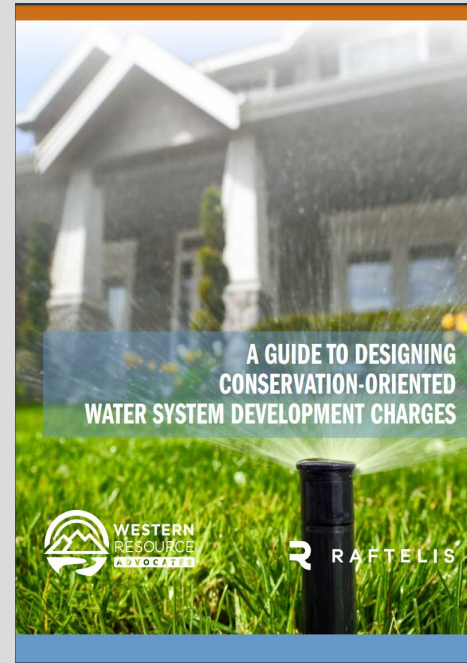
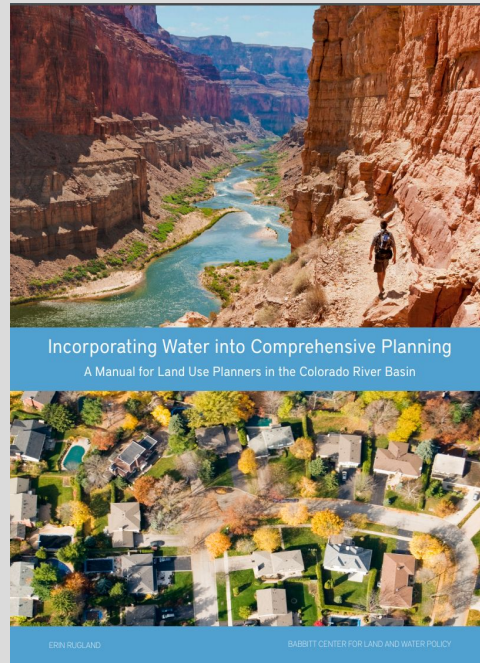
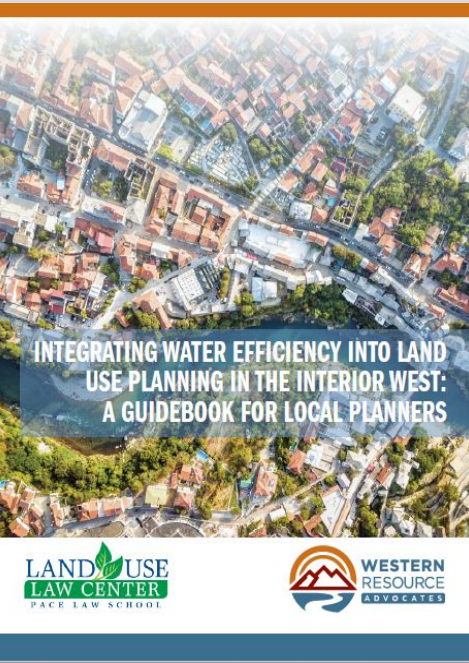


BABBITT CENTER  
FOR LAND AND WATER POLICY



CWEL  
Center for Water-Efficient Landscaping

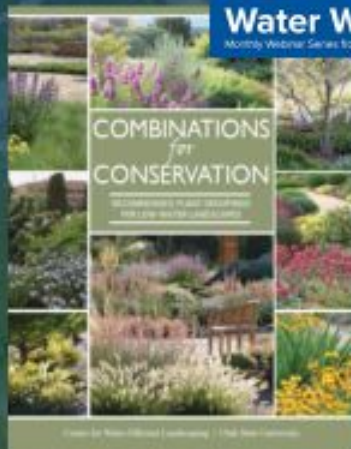
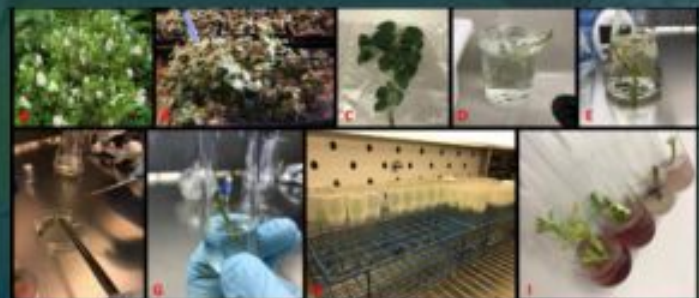
## Integrated Water & Land Use Planning Reports







The mission of the Center for Water Efficient Landscaping is “to sustain the quality of life enjoyed from landscaping while conserving water.”

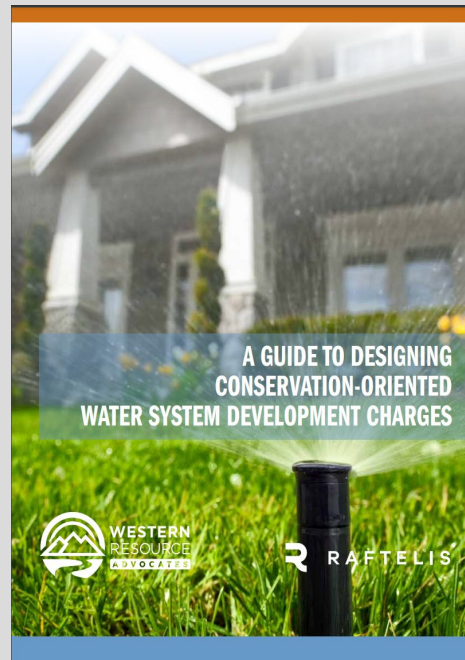
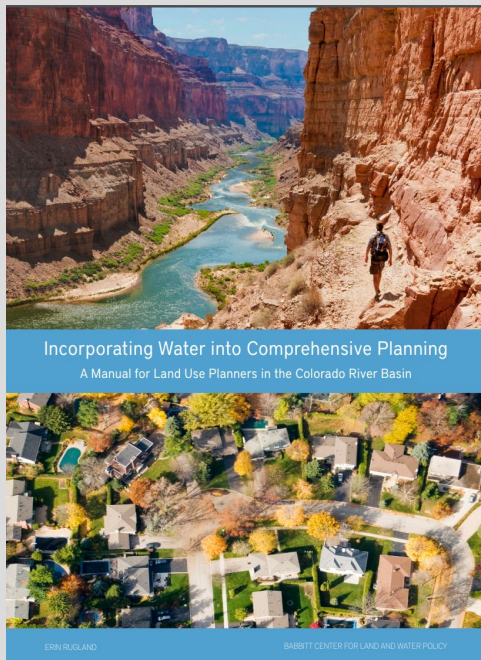
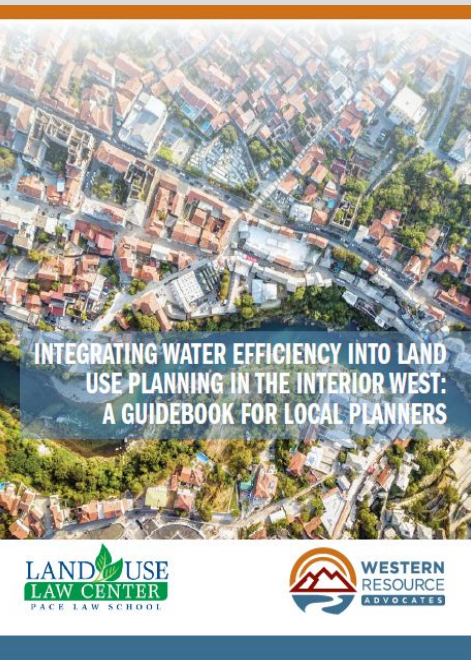


Research

Education

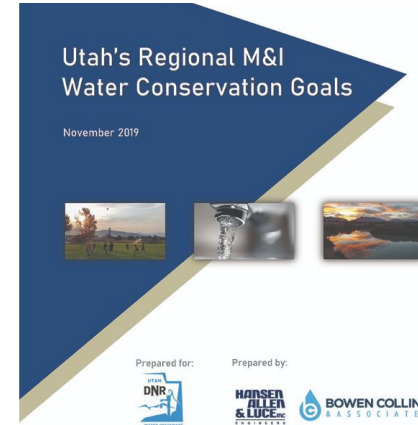
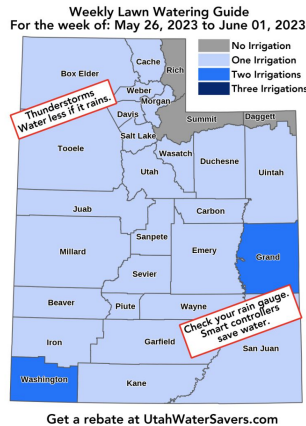
Outreach

# Integrated Water & Land Use Planning Reports





# DWRe Resources



- Weekly Lawn Watering Guide
- Low Water Turf Guide

- Localscapes
- Conservation gardens
- Water Checks (USU)

## Support

- Water Conservation Plans
- Regional Conservation Goals





# Incentives and Rebates

## Utah Water Savers



- Up to \$75/controller
- WaterSense labeled
- Government Smart Controllers 50% up to \$1500



- Up to \$100/toilet
- WaterSense labeled
- Residential program
- Homes built before 1994



### Landscape Incentives

- Eligible cities
- Water district partnerships



# Landscape Incentives

To qualify, at minimum, the following water-efficient landscape ordinances for new construction are required:

- No lawn on parking strips or areas less than eight feet in width in new development.
- No more than 50% of front and side yard landscaped area in new residential developments is lawn. Lawn limitations do not apply to small residential lots with less than 250 square feet of landscaped area.
- In new commercial, industrial, institutional and multi-family development common area landscapes, lawn areas shall not exceed 20% of the total landscaped area, outside of active recreation areas.
- **If you have any questions please contact your local water district or you may also email us at [waterrebates@utah.gov](mailto:waterrebates@utah.gov).**

# Funding Opportunities

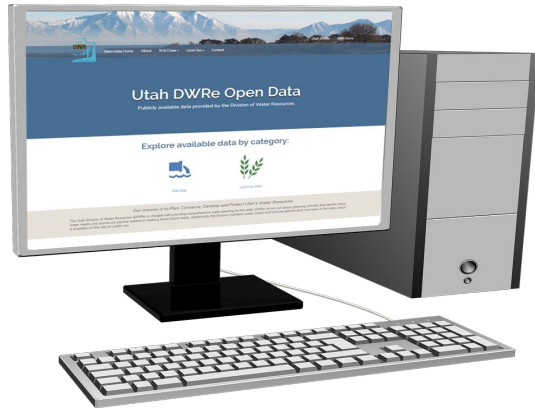
- DWR<sub>e</sub>
  - Low-interest or no-interest loans for existing infrastructure.
  - Secondary Meter Grants
- DDW
  - Planning Advances available for Master Plans, Asset Management Plans, and including water in General Plans
  - Low-interest or no-interest loans to replace aging infrastructure.
  - Low-interest or no-interest loans to install new infrastructure.

# Open Water Data Website

- **Interactive Web Mapping Applications**

Visually explore the data and view summary statistics (by river basin, county, retail supplier, and more)

- **Downloadable Data** (shapefiles, spreadsheets)



[water.utah.gov/opendata](https://water.utah.gov/opendata)

## Current Offerings:

Water Related Land Use (WRLU) Data

- Historical Inventory Data
- 2017-2021 Statewide WRLU Datasets



Municipal and Industrial Water Data

- 2015-2020



Water Budget Data

- Historical Data thru 2019
- (2020 update coming soon)



# Find the land and water team @

Rick Webster  
Project Specialist  
801-910-5206  
rickwebster@utah.gov

Hailey Kirlin  
Planning Technical Support  
206-465-9324  
hkirlin@utah.gov

Michael Grange  
Division of Drinking Water  
801-674-2563  
mgrange@utah.gov

Dixon Ekins  
Division of Drinking Water  
(435) 291-0122  
dcekins@utah.gov

Jay Olsen  
Department of Agriculture  
801 718-0517  
Jayolsen@utah.gov







# Thank you.

**Utah Division of Water Resources**  
[water.utah.gov](http://water.utah.gov)

1594 W North Temple  
Suite 310  
Salt Lake City, UT 84114-6201  
(801) 538-7230





The mission of the Center for Water Efficient Landscaping is "to sustain the quality of life enjoyed from landscaping while conserving water."



Water Well with CWEL

COMBINATIONS OF CONSERVATION

Research      Education      Outreach



UTAH  
DNR

WATER RESOURCES



**BABBITT CENTER**  
FOR LAND AND WATER POLICY

*A Center of the Lincoln Institute of Land Policy*



**WESTERN  
RESOURCE  
ADVOCATES**

PROTECTING THE WEST'S LAND, AIR, AND WATER

# Growing Water Smart

Brings key community staff and decision-makers on water and land use planning together to collaborate to help build a more resilient and sustainable water future

## Three Successful Utah workshops

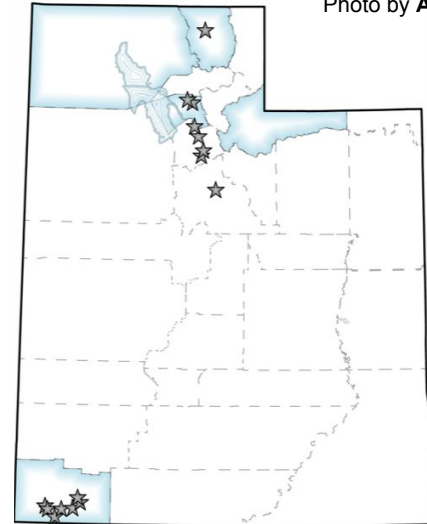
51 communities and 225 people participated in these workshops

Each team created an action plan along with an implementation timeline

The division is planning a fourth workshop for northern Utah in 2024



Photo by Aaron Fortin, USU



GWS Participant Map



# Long Term Water Conservation

## Regulation

- Water conservation plans
- Regional water conservation goals
- Metering requirements
- Tiered water rates
- Landscape ordinances
- Plumbing standards



## Education

- Slow the Flow
- Smart Billing
- K-12 water education
- Municipal plan assistance



## Incentives

- Smart controller rebates
- High-efficiency toilet rebates
- Landscaping Rebates
- Transparent water billing grants
- Secondary metering grants

# Integrated Water & Land Use Planning Reports

